



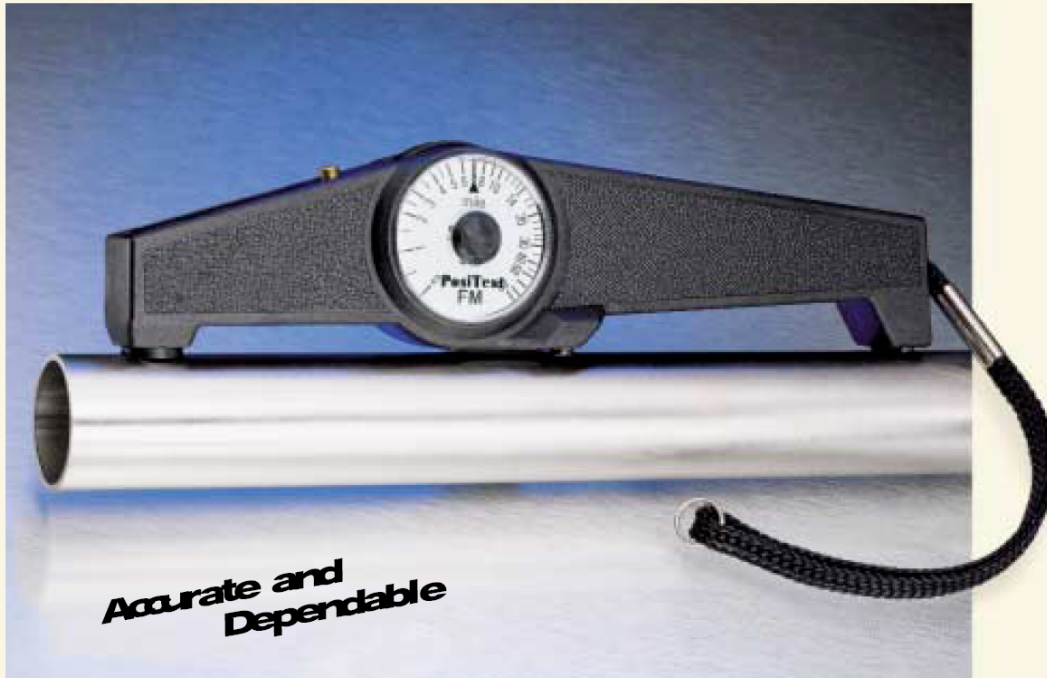
"Your Direct Source for Plant Maintenance, Reliability, Test & Measurement"

www.reliabilitydirectstore.com

2911 South Shore Blvd. Suite 170, League City, TX USA 77573 Phone: 281-957-5283 Fax: 281-334-4255

PosiTest[®]

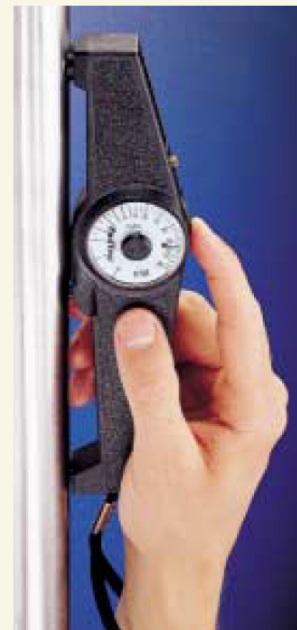
Worldwide Leader in Coating Thickness Gages



For the non-destructive measurement of non-magnetic coatings such as (paint, enamel, plastic, galvanizing, metalizing, plating, etc.) on STEEL.

▲ Easily measures small parts of almost any shape

Stable design with additional tail-end support. No annoying rocking during measurement. ►





PosiTest[®]



For the non-destructive measurement of non-magnetic coatings (paint, enamel, plastic, galvanizing, metalizing, plating, etc.) on STEEL.

ACCURACY

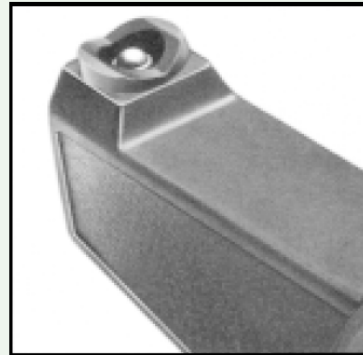
- Permanently calibrated
- Highly wear resistant Carbide Probe for longest life and continuous accuracy
- Remove center of dial cover for easy recalibration adjustment
- Modern and up-to-date Scale Ranges fit all applications

DURABILITY

- Extra rugged housing, not affected by mechanical shock, water, acid or solvents
- Unique overall design, fully supported, positive positioning, no pivoting tendencies during measurement
- Can be used fully supported or with only the front probe area contacting the surface
- Functions on a permanent rare-earth cobalt magnet, no battery
- Explosion Proof – Refinery safe
- 1 year warranty

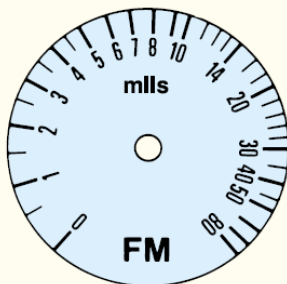
EASY TO USE

- Positive visual and audible indicators to designate when thickness reading is established
- “V” grooves in probe housing and Gage base allow correct positioning on cylindrical objects
- Compact, lightweight, precisely balanced, independent of gravity – can be used in any position
- GO/NO-GO button can be pre-set for rapid measurement
- Probe contact and dial rotation all in a one-finger operation
- Furnished with wrist strap, neck strap and instructions in a high quality leather case with belt loops for your convenience



Carbide measuring probe for long life.

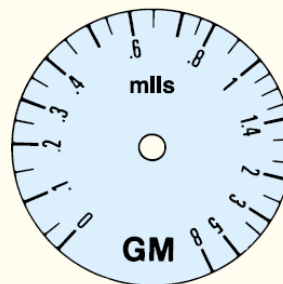
For: Hot dip galvanizing, hard chrome metalizing, paint, enamel, plastic coatings on steel



Scale FM 0–80 mils
Tolerance: ± 0.2 mils up to 4 mils
 $\pm 5\%$ of the reading over 4 mils

Scale F 0–2000 microns
Tolerance: ± 5 microns up to 100 microns
 $\pm 5\%$ of the reading over 100 microns

For: Electroplating, thin paint films, phosphating on steel



Scale GM 0–8 mils
Tolerance: ± 0.04 mils up to 0.8 mils
 $\pm 5\%$ of the reading over 0.8 mils

Scale G 0–200 microns
Tolerance: ± 1 micron up to 20 microns
 $\pm 5\%$ of the reading over 20 microns

†Based on N.I.S.T. (NBS) Standards • Conforms to ASTM and international standards