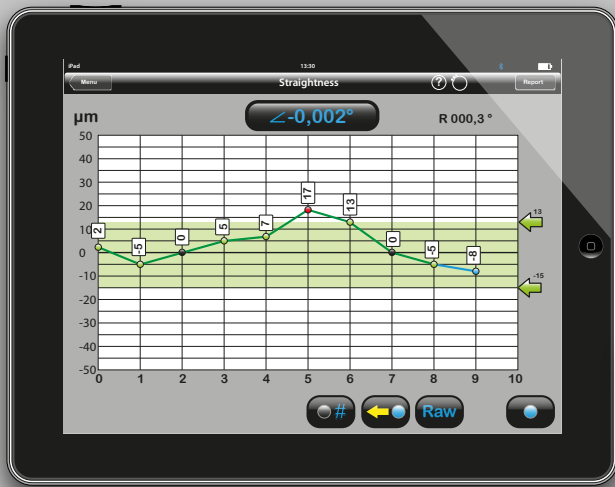


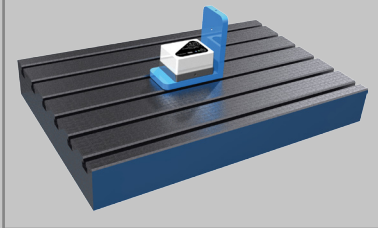
ALiSENSOR™ Level



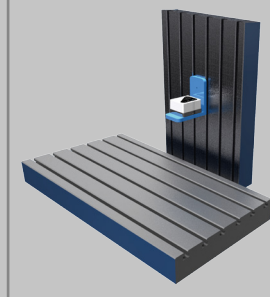
Bluetooth®



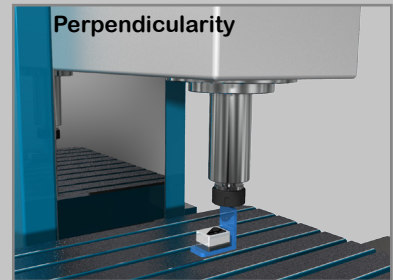
Straightness and Flatness



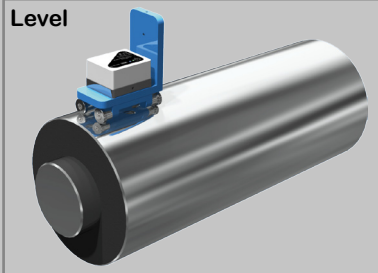
Squareness



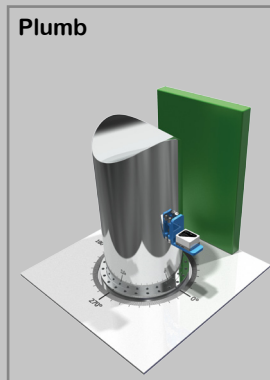
Perpendicularity



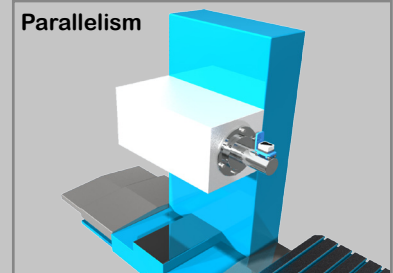
Level



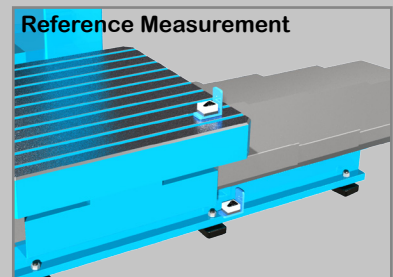
Plumb



Parallelism



Reference Measurement



ALiSENSOR™ uses the iOS platform.
Advantages:

- Global accessibility.
- Already established user interface.
- Outstanding technology.
- User instructions embedded in the app as text, animations or video.
- Immediate access to the latest software version.



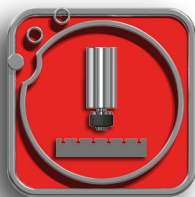
ALiSENSOR™ Level



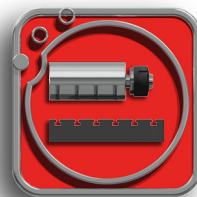
Straightness



Squareness



Spindle
Perpendicularity



Spindle
Parallelism



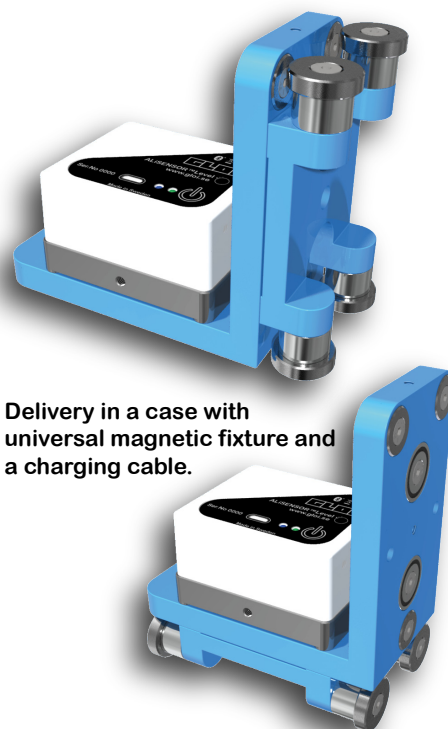
Shaft Plumb



Shaft Level



Multi Values



Delivery in a case with
universal magnetic fixture and
a charging cable.

Technical specifications ALiSENSOR™ Level

Pitch Axis:	
High resolution measurement range:	±15°
Resolution (±15°):	0.001°
	0,017 mm/meter [mils/inch]
	0,000204 inch/foot
Limits of error:	
Full measurement range:	0,5% +1 digit
Resolution full range:	±180°
	0.1°
Roll Axis:	
Measurement range:	±180°
Resolution:	0.1°
Accuracy:	±1°
Bluetooth:	Version 2.1 +EDR, Class 2 device
Battery type:	Lithium Polymer
Charging socket:	Micro USB
Charging voltage:	4.75 to 5.25 Volt (USB 2.0)
Charging time:	~4h
Continuous Operating time:	>20h
Operating temperature:	0°C to +45
Environmental Protection:	IP67
Material Used:	ABS, anodized aluminum
Weight (sensor unit only):	190g [6.7 oz]
Dimensions:	65.5x54x36.5mm [2.58"x2.13"x1.44"]

Made for
 iPod iPhone iPad

Gloi AB participates in the "Made for iPod" (MFi) program and as such develops, manufactures and sells products with the "Made for iPod", "Made for iPhone" and/or "Made for iPad" compatibility logo indicating that the product is fully integrated in the iOS platform.

GLOi AB
 Åbäcksgatan 6B
 431 67 Mölndal
 Sweden
 +46(0)705 624 411
 gloi.se

