

PANEL TACHOMETERS / TOTALIZERS / RATE METERS

ACT Series

RoHS NIST CE



ACT-3X Panel Tachometer/Ratemeter/Totalizer

The ACT Series consists of two models - one tachometer and one tachometer/ratemeter/totalizer. Both feature universal inputs for two and three wire sensors providing signals of 0-5V TTL or 0-1.1 Vac to 0-50 Vac. Both models operate from all Monarch sensors (see Page 9) and display in fixed or floating decimal point format. The ACT-3X dual channel input provides the best feature set of any panel or bench top instrument available today.

Features:

ACT-1B (5-99,999 RPM)

- Economically priced
- Output options: 4-20 mA, 0-5 Vdc or TTL pulse

ACT-3X (5-999,990 RPM)

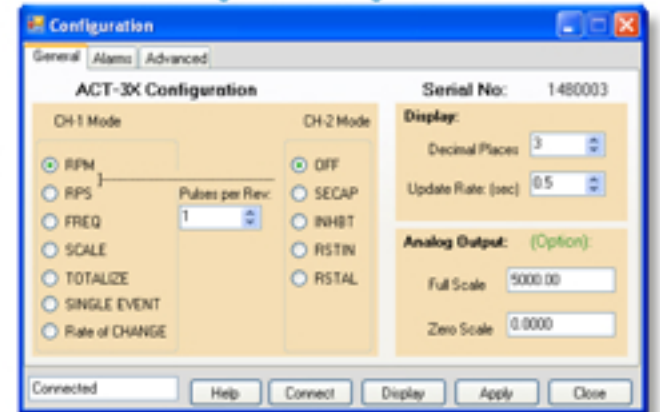
- N.I.S.T. Traceable Certificate of Calibration included
- Standard TTL pulse repeater output
- Optional 4-20mA, 0-5Vdc, and 2 alarm outputs
- Optional Serial, USB or Ethernet communications
- Single event speed capture from start and stop pulses, in units such as mph, cm/sec, etc. Using two sensors - for linear rate of travel on second input channel.



PM Remote Software

Both the ACT-1B and the ACT-3X can be used with the Windows based PM Remote Software to further enhance their capabilities. Use your PC to customize the configuration of the ACT-1B and ACT-3X or view real-time data over the communications interface. Live data can also be streamed directly into Microsoft Excel™. PM Remote Software is included with the optional USB Programming Cable for the ACT-1B and the ACT-3X (with standard serial option) and is included with the ACT-3X when ordered with RS232C serial, USB or Ethernet communication options.

PC Configurable using PM Remote Software



Ordering Information

PM Remote Software and USB Programming Cable:
for use with ACT-1B and ACT-3X (with standard 3.5mm phono connector).

Specifications	ACT-1B	ACT-3X
Speed Range	5-99,999 RPM	5-999,990 RPM (Speeds below 5 RPM possible with multiple pulses/revolution)
Accuracy	±1 RPM or 0.005% of reading	±0.001% of reading or ±1 of displayed value (standard gate) ±0.006% of reading or ±1 of displayed value (fast gate).
Resolution	1 RPM	Up to 0.001RPM, 10 RPM (100,000 to 999,990 RPM).
Totalizer/Counter	N/A	Display Range: 0.001 to 99,999
Input Configuration	Universal inputs for all Monarch Sensors or TTL input or 1.5 to 50Vac input.	
Alarm Output	N/A	2 Form C relay contacts rated 1A at 230 Vac, can be set as failsafe.
Alarm Capability	N/A	Two alarm setpoints: set as High or Low, latching or non-latching Hysteresis and low limit lockout are programmable.
Analog Output	Voltage (AO): 0 to 5Vdc, 5mA max load or Current (IO): 4-20mA (500 ohms max). 1-5Vdc with 250 ohm resistor.	
Pulse Repeater	0-5V TTL compatible. One pulse out for each pulse in.	
Communications	Optional (3.5mm phono plug)	Standard (3.5mm phono plug), Optional RS232C, USB type B, or Ethernet
Scale Factor	N/A	0.0001-9999.9
Totalize/Count	N/A	1-99,999
Display	5 digits, 0.56" (14 mm) high red LED	
Display Update	2x per second above 120 RPM	
Dimensions	1/8 DIN by 4.5" (114 mm) deep	
Input Power	Standard: 100-240Vac, 50/60Hz Optional: 12 or 24 Vdc ±20%, Isolated 5 Watts.	
Sensor Power	5Vdc or 12Vdc or optional 24Vdc to sensor	

Ordering Information

ACT-1B -

ACT-3X-

